



THE FUTURE CO.



# Looking to transform lives while securing your license to operate?

## If it's your call, it's our call

---



If your company operates  
in **rural areas and engages  
with local communities**,  
there is a growing imperative  
to give back — **creating  
meaningful, lasting social  
and environmental impact.**

We offer a smarter, more strategic,  
and sustainable approach than  
conventional CSR programs.  
We move beyond **surface-level  
initiatives to deliver high-impact,  
long-term solutions that uplift  
communities** while enhancing  
operational stability and business  
performance.

# Thriving communities foster smoother operations, stronger partnerships, and accelerated local synergies.

Neglecting these aspects can result in reputational, financial, administrative, and legal risks.

While many companies acknowledge this in principle, we provide a practical, cost-effective, and innovative way to turn purpose into measurable results:

## ✓ Operational Stability & Risk Mitigation

Reduce social unrest, regulatory delays, and project disruptions.

## ✓ Community-Led Development

Shift from charity to sustainable, self-driven transformation.

## ✓ Trust & Long-Term Partnerships

Build deeper, lasting relationships with communities.

## ✓ Stronger ESG & CSR Alignment

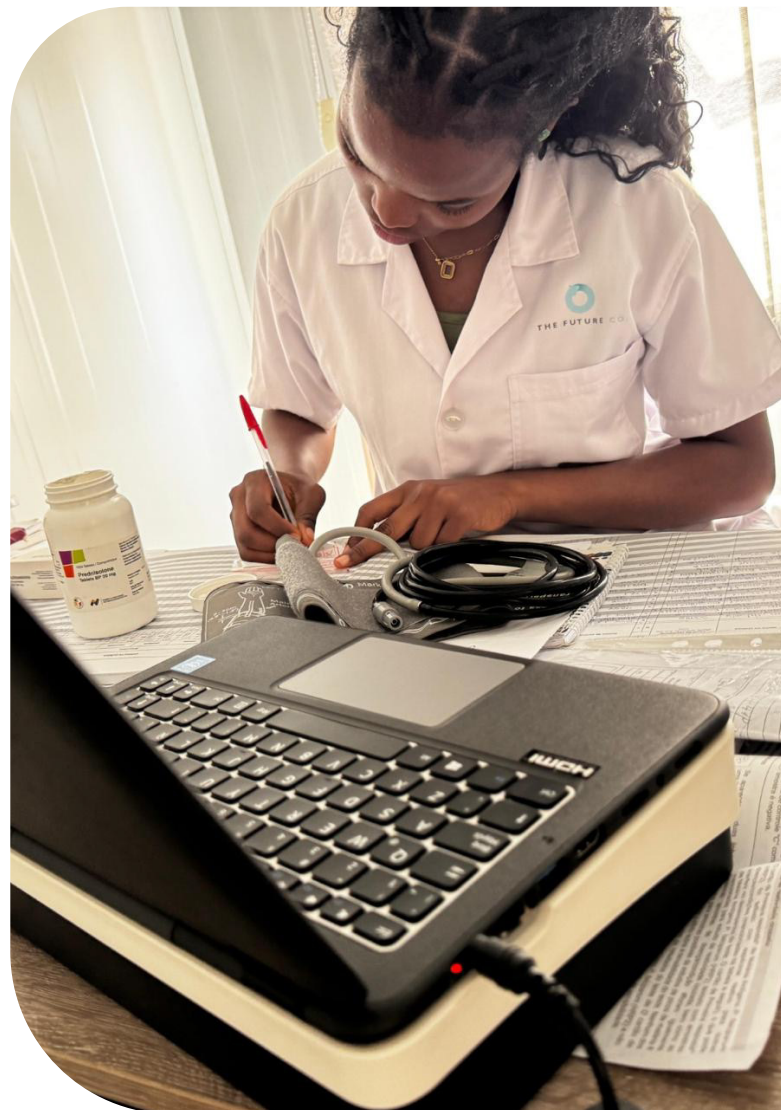
Meet global standards with visible impact.

## ✓ Measurable, Transparent Outcomes

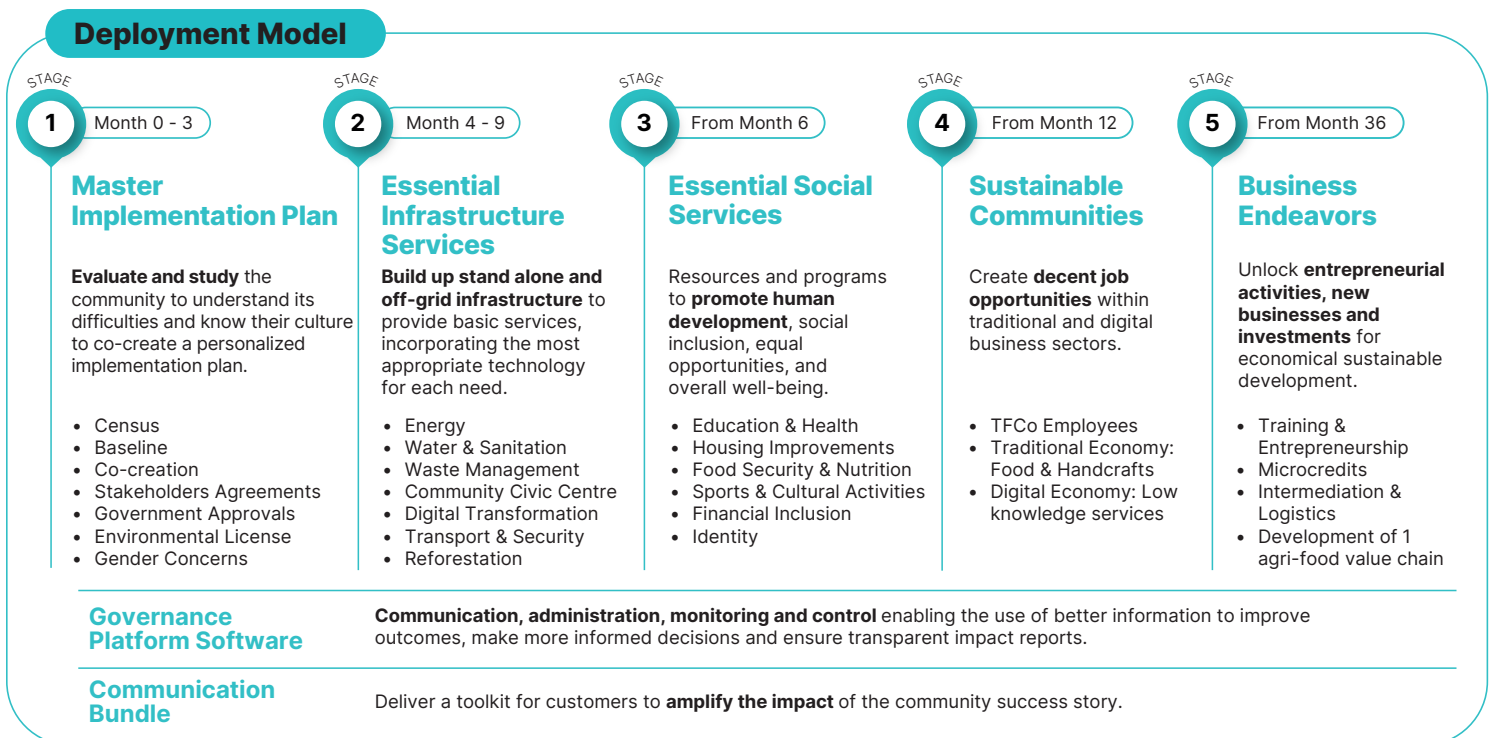
Directly contribute to the UN SDGs and Multidimensional Poverty Index (MPI).

## ✓ Greater Equity Across the Value Chain

When your local employees and their families have access to healthcare, clean water, and proper nutrition, companies benefit from a more stable, reliable, and productive workforce—strengthening the entire value chain.



Our flagship solution is the **RISE Service –Resource Integration for Social Empowerment**– a groundbreaking, 360° approach to tackling poverty in all its forms.



Modular, flexible, and scalable model.

Can be contracted for a period of 2 to 5 years, depending on your organization's goals and timelines.



**RISE Price "Leave No One Behind" SLA**  
\$2.15 usd per person per day + Set up fee

### RISE Benefits

Our pricing is aligned with the **World Bank's International Poverty Line**, offering predictable, multi-year budgeting with no hidden costs. With RISE, you get:

- ✓ Lower total cost than integrating vertical services separately.
- ✓ Structured multi-year payments aligned with implementation.
- ✓ A single point of accountability for faster, synchronized execution.
- ✓ Permanent local presence and proactive maintenance.
- ✓ Tailored solutions that leverage existing infrastructure and reduce duplication.
- ✓ Guaranteed impact through our "Leave no one behind" Service Level Agreement (SLA).



## Who We Are

We're a purpose-driven company committed to eradicating rural poverty from the roots. As proud members of the UN Global Compact, we partner with companies like yours to reach rural communities where you operate— helping you fulfill your ESG goals, CSR commitments, and social development policies with measurable and sustainable impact.



## Be a catalyst for change

Your company has the opportunity to lead both the market and the movement toward inclusive, sustainable development.

Let's work together to strengthen your sustainability strategy while lifting entire communities out of poverty and improving lives — all while protecting the environment and your company's long-term license to operate.

Reach out today to explore how RISE can align with your business objectives while making a meaningful difference in the communities you serve.



**Together, we can build a better world —  
and a better world means a better future.**